

ITECO®

TEXTILE ELECTRONICS

www.itecotextile.it



MUX

The Ultimate Data Station

AUTOCLEARING



GOLD
compatible
Millennium
compatible

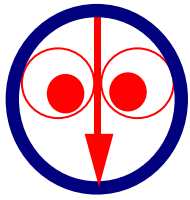
ITECO®
TEXTILE ELECTRONICS
www.itecotextile.it



itma 
birmingham 2003



ITECO TEXTILE ELECTRONICS
Via di Prato, 74 - I - 50041 Calenzano (FI) - ITALY
Tel: +39 055 8878151 Fax: +39 055 8878152
business@itecotextile.it



MUX

The Ultimate Data Station

The Gate to Iteco XQ-System

The Iteco MUX is the Ultimate Data Station available for Millennium and GOLD systems.

Its **Jumbo LCD display** and the extended Keypad allows operator to work more comfortable and clearly on the clearing system. The 'Autoclearing' function (see Millennium and GOLD leaflet for further information) is also available on the MUX, as well as 'Repetitive Faults' channel to detect storms of micro-stripbacks.

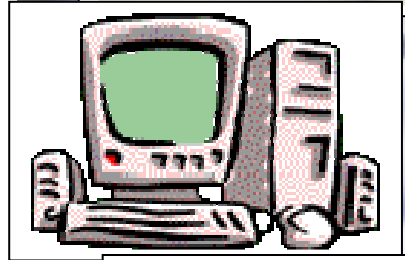
The **'Flash RAM memory'** inside the MUX allows to **SAVE clearing program** and other data as files to be recalled for further applications.

An **internal fast-24 columns printer** is also built-in to get the following reports:

- Saved clearing program
- Actual clearing program
- Quality & Defect reports
- Production Efficiency reports

The most important benefit of the MUX is the **interface** (RS458) with the **Iteco 'XQ-SYSTEM' software for Windows™**. The MUX can be easily connected to a standard **Personal Computer** (using the Iteco XQ cable) to work all the connect clearers lines (**up to 10 MUX** to be connected to one PC) using the XQ-SYSTEM to **remote control the clearers and get the manufacturing efficiency data.**

Ligth chenille
Heavy chenille
Slub chenille
Fancy chenille
Novelty yarns
Slubs fancy yarns
Bouclè, Ondè, Frisè...
Spun heavy yarns
Yarn/Yarn fancy twisted yarns
Fiber/Yarn fancy twisted yarns
Double twisted yarns
High fancy yarns



XQ-SYSTEM EFFICIENCY DETAILS

FROM: 15 set 2001, 8:47 TO: 8 nov 2001, 8:47

From Clearer 1 on Max 1 to Clearer 50 on Max 15 Change

MUX	SPINDLES	Prod.@ Efficiency (pounds)	Prod.@ 100% Efficiency (pounds)	Actual Efficiency (%)	Run time (h:min)
MUX 1					
1	1	0	0	0	0:00
1	2	0	0	0	0:00
1	3	0	0	0	0:00
1	4	0	0	0	0:00
1	5	0	0	0	0:00
TOTAL Max 5 Spindles 05 0 0 0 0:00					
MUX 2					
1	6	0	0	0	0:00
1	7	0	0	0	0:00
1	8	0	0	0	0:00
1	9	0	0	0	0:00
1	10	0	0	0	0:00
TOTAL Max 10 Spindles 010 0 0 0 0:00					
MUX 3					
1	11	0	0	0	0:00
1	12	0	0	0	0:00
TOTAL Max 12 Spindles 1012 0 0 0 0:00					
TOTAL Mux 1 0 0 0 0:00					

Save as: Print Report Print Graph Exit



ITECO TEXTILE ELECTRONICS
 Via di Prato, 74
 I-50041 Calenzano (FI)
 www.itecotextile.it
 business@itecotextile.it
 Phone: +39 055 8878151 a.r.
 FAX: +39 055 8878152

